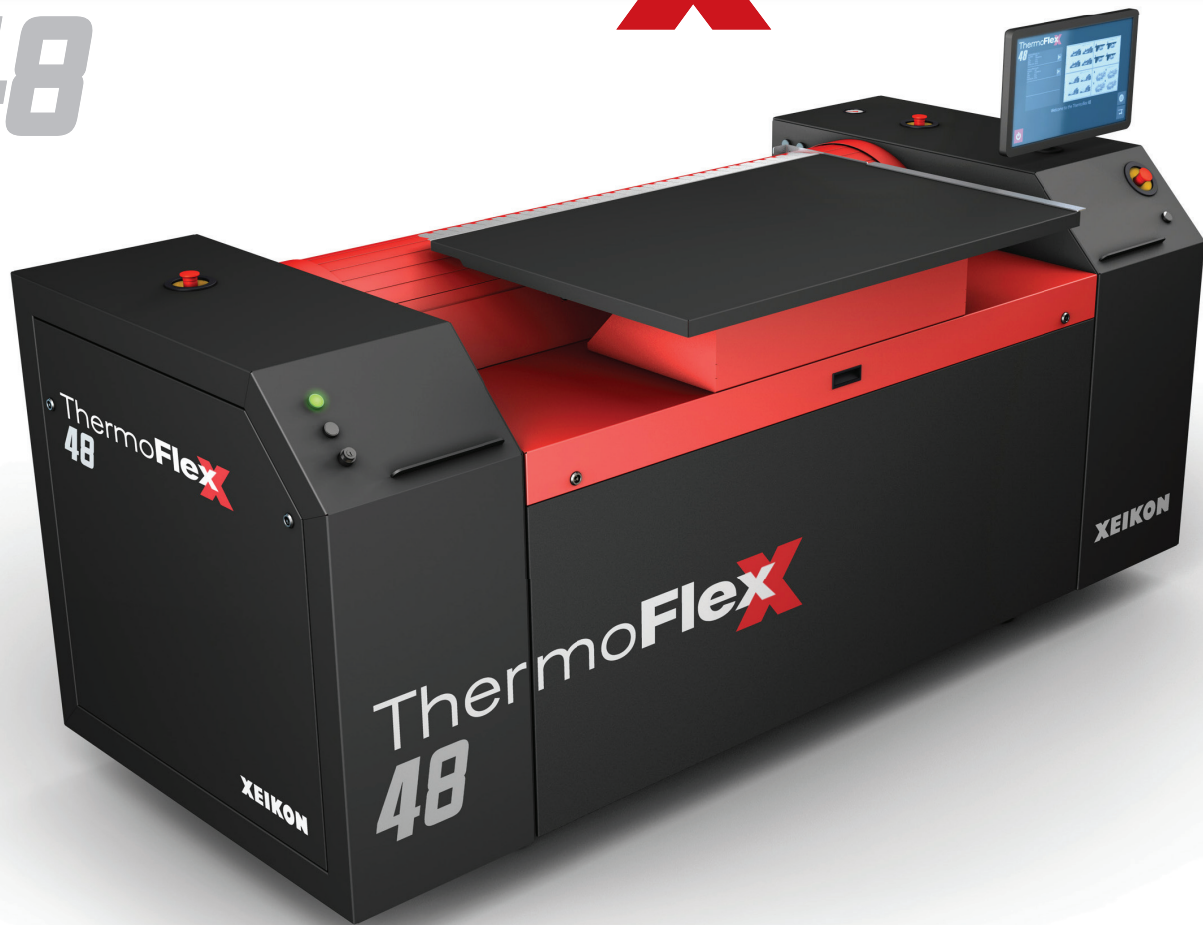


# ThermoFlexX

## 48



The ThermoFlexX 48 with its maximum plate size of 900 x 1200 mm (35 x 48") is the perfect fit for the medium web segment. It's an excellent choice for label & flexible packaging printers who want their own productive imager and to remain independent whilst making plates in the shortest time possible at highest quality. ThermoFlexX 48 is an ideal size to fit easily into available space with realistic cost for plate processing equipment and digital workflow.

***ThermoFlexX 48 is the ultimate flexo plate imager combining superior quality, handling and productivity.***



### High Quality Imaging

The new generation optical system offers superior quality thanks to a unique design using leading edge technology.

The fiber laser represents today's best technology for digital imaging, offering superior quality. The robustly designed ThermoFlexX is made using heavy duty industrial components, making high speeds possible without fluctuation and vibrations. This provides the most accurate and consistent imaging quality available today.

### Productivity

The new imaging system is not only built for optimum quality, but also to combine this quality with superior speeds. Productivity up to 6m<sup>2</sup>/h can be achieved at the standard quality of 2540dpi.

### Ease of Use

The ThermoFlexX 48 can automatically load and unload plates with one touch of a button.

### Open

ThermoFlexX imagers excel in their choice of resolution. Any of the industry standards can be used. The ThermoFlexX imagers can be integrated with any workflow or RIP that can produce 1 bit TIFF file format. Closed file formats such as LEN-files can be converted to 1 bit TIFF. ThermoFlexX can image all digital plates, any brand, solvent and water washable or thermal processing, and is compatible with all plate making equipment.

### Low Plate Waste

Clever technical innovation, such as the unique vacuum slider, demonstrate our understanding that users need to save cost and time.

No more taping partial plates!

### Motion Accuracy

The robust design is based on a modular platform with a small footprint. The imaging system is driven by linear motors with ultimate accuracy. The direct drum drive guarantees a continuous speed without fluctuations.

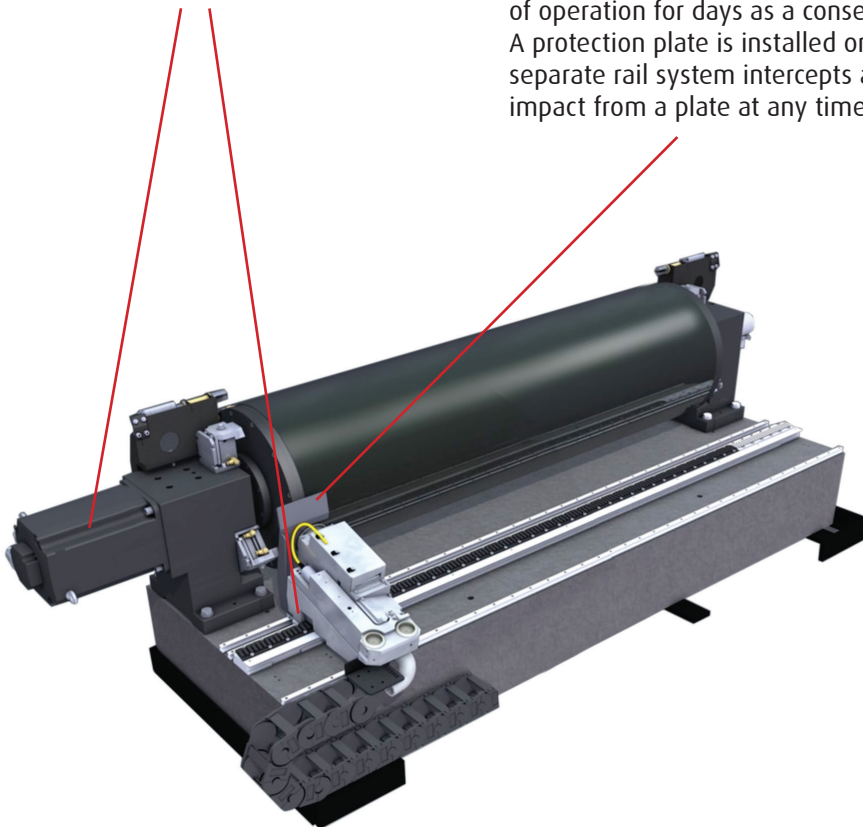
### Laser Protection Plate

A plate flying off because of manipulation problems can happen on any CTP. These accidents can seriously damage the imaging unit leaving it out of operation for days as a consequence. A protection plate is installed on a separate rail system intercepts any impact from a plate at any time.



### Imaging Software

The ThermoFlexX imager is controlled by a 360° rotating display. This makes the machine accessible from any side. The intuitive interface shows the job list with all parameters and a preview of the currently imaging plate. The imaging progress on the plate preview screen is clearly visible all around the platemaking room.



### Auto Loading

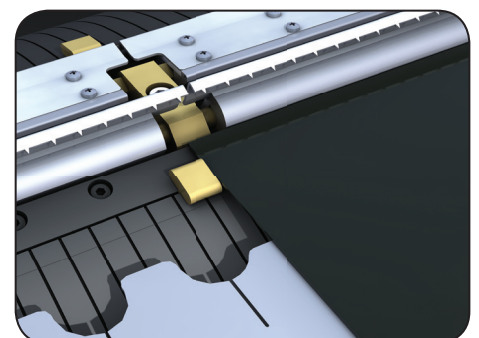
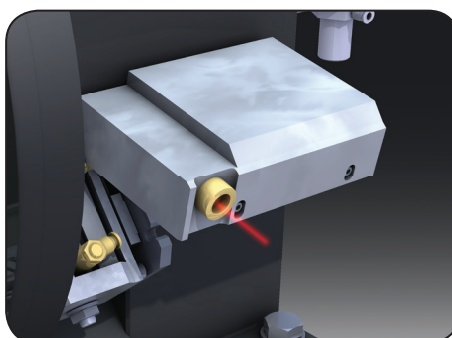
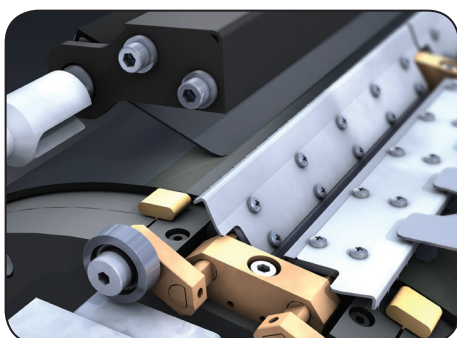
The ThermoFlexX 48 can automatically load and unload plates with one touch of a button. An innovative guidance system makes sure that even thick plates, up to 6,35 mm (0.25"), can be seamlessly mounted on the drum, and all automatically.

### Automatic Calibration

The new generation optical system offers superior quality thanks to a unique design using leading edge technology. Our standard auto-calibration system guarantees consistency and high quality imaging.

### Automatic Vacuum Slider

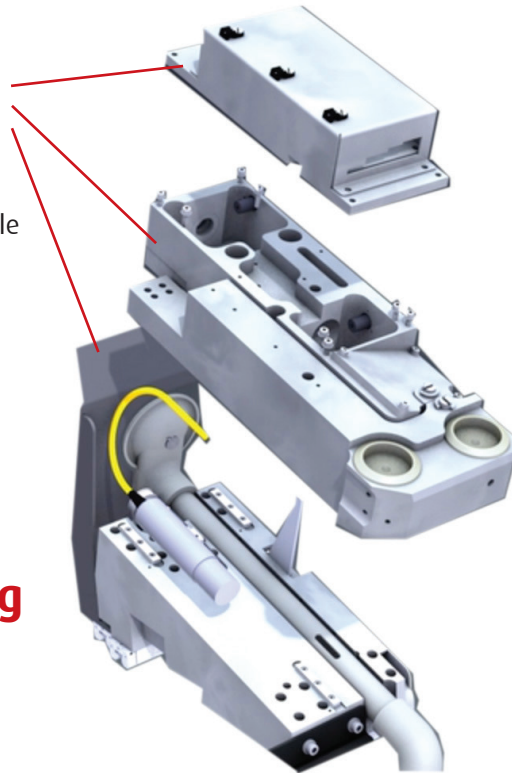
Optimum plate handling and manipulation avoids accidental damage. The automatic vacuum slider, a unique feature on ThermoFlexX imagers, offers efficient operation for partial plates. By moving the slider to the edge of the plate the vacuum is concentrated beneath the plate, which eliminates the need for taping and foil covering and still allows full speed imaging.





## 3 Component Imaging Head

The imaging system consists out of 3 independent modules: motor, optics and laser. This flexible design allows straightforward replacement of any of the modules. It is even possible to perform optical fine tuning remotely. This makes service interventions simple and hardware upgrades logical and smooth.

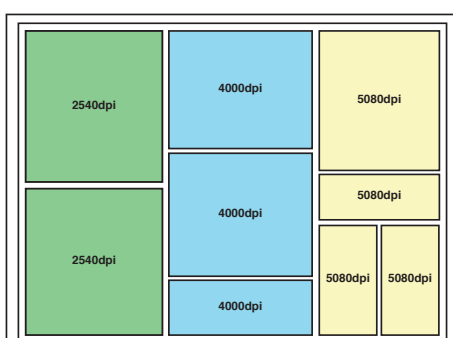


## Automatic Resolution Switching

The optical system is based on 3 lenses. We use the most suitable lens for each resolution without compromise in quality. Changing resolution is performed automatically in the background. The possibility of combining jobs with different resolutions on one plate saves time and avoids imposition mistakes.

## Multi Resolution

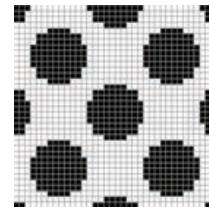
ThermoFlexX supports all 1 bit TIFF format from any RIP at all standard resolutions 2400 - 2540 - 4000 - 4800 - 5080dpi. Closed file formats such as LEN-files can be converted to 1 bit TIFF format. In the Multiplate software, TIFF's with different resolution can be combined on one plate.



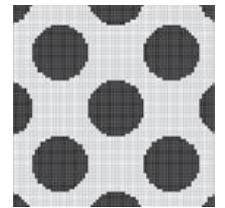
## High Resolution

With 5080dpi resolution, we push quality standards to a higher level.

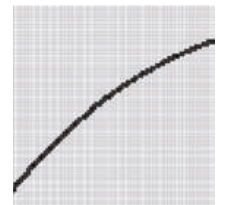
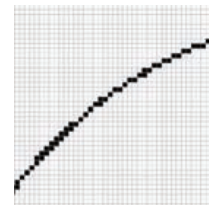
- smaller screen dots & finer details
- sharper text and line-work
- full image contrast
- greater production stability trough platemaking and printing



2540

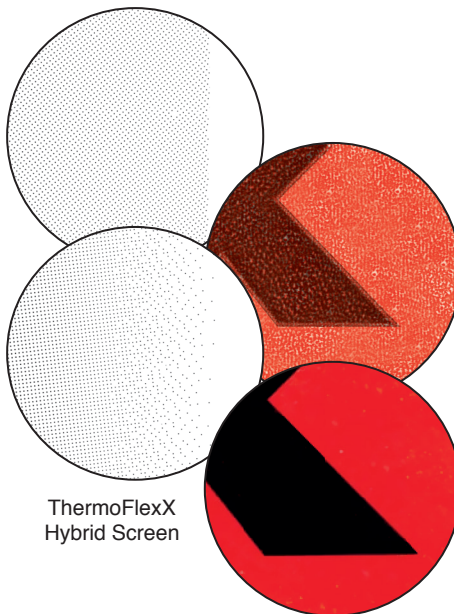


5080



## Innovative Screening

New ThermoFlexX screening technology offers superb highlights with a smooth transition to 0% tint value, while solids and line-work retain excellent detail.

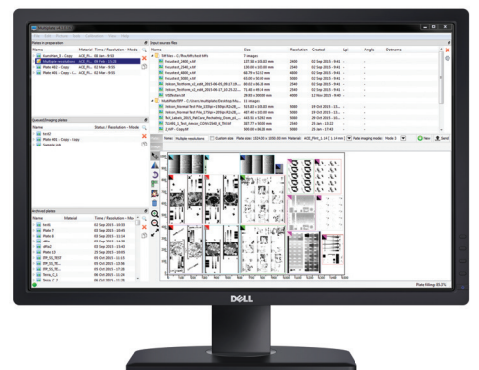


ThermoFlexX Hybrid Screen

ThermoFlexX Surface Screen

## MultiPlate

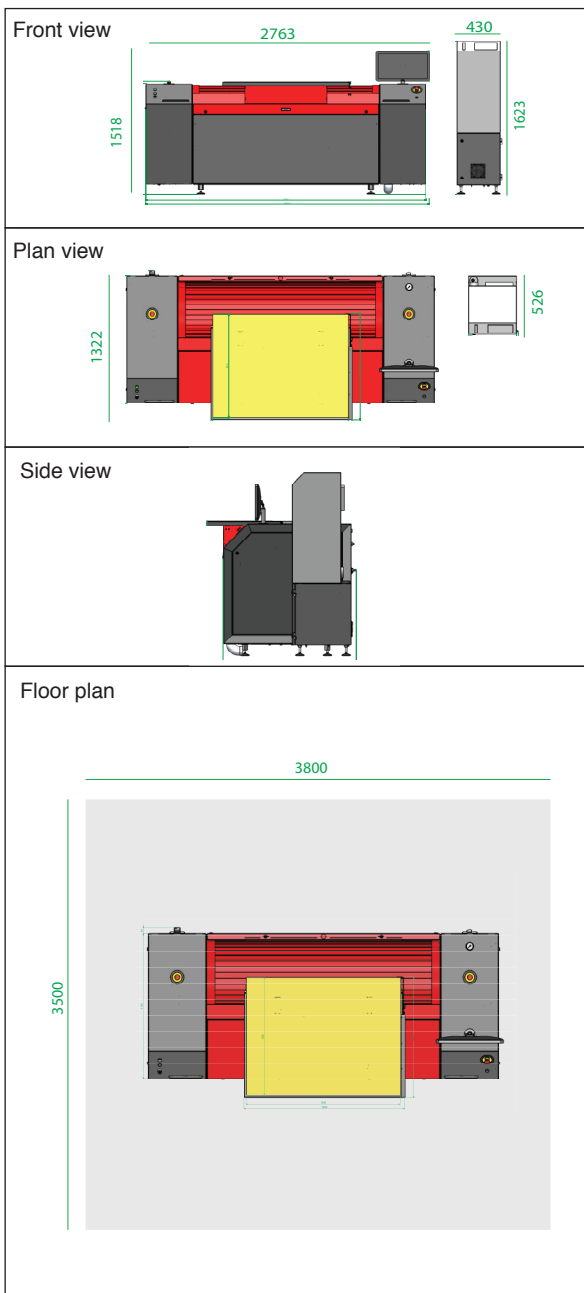
The new MultiPlate 4.0 has a look and feel interface providing amazing ease of use. 1 bit TIFF's are arranged automatically or manually and jobs of different resolutions can be combined. The status of different jobs is intuitively presented. With the search and filter tool you can easily find files, even if they are stored in an archive.



### SPECIFICATIONS THERMOFLEXX 48

	48 E	48 S
Laser type	Fiber laser 1064nm	
Laser Power	50 W	100 W
Standard Resolution*	2400 2540	2400 2540
High resolution*	4000 4800 5080	4000 4800 5080
*By default one resolution (2400 or 2540dpi) comes with the imager. Additional resolutions are optional.		
Productivity 2400 dpi **	3	6
Productivity 5080dpi **	1,5	3
** Depending on plate type and quality requirements. Thicker plates are imaged 60% of the mentioned productivity.		
Image Quality	at 2540 dpi : up to 175lpi / at 5080 dpi : up to 250lpi	
Hybrid Drum option	Optional	
Customised register pins		
Customised magnetic zones		
Loading Table	Top loading table	
Clamping system	Automatic	
Resolution Change	Automatic	
Focus setting	Auto focus	
Plate loading	Manual / Automatic	
Partial Plate handling	Automatic Vacuum Slider	
Maximum Plate size (drum dimensions)	900 x 1200 mm or 35" x 48" (width: 1200 mm / circumference: 900 mm)	
Plate thickness	0.73 to 6.35 mm 0.029 to 0.25"	
Mountable plate materials	Flexo plates and letterpress plates on polyester base Dry Films 0,2mm Digital Screens Gallus Screeny Metal back plates Not possible	
Applications	Label & Tag Folding Carton Flexible Packaging	
Top & Bottom clamp space	15 mm / 0,6"	
Machine Dimensions	Width: 2763mm / 108,8" Depth: 1322mm / 52" Height: 1200mm / 47,3"	
Required Floor space	3800 x 3500 mm 150" x 138"	
Weight	2500 kg / 5512 lb	
Compressed Air	Min. 6 bar - free of oil/condensation Compressor not included - 0,5" connection	
Electrical connection	Voltage 3x400V (+/-5%), N, PE Frequency: 50 Hz -60 Hz Fuse: 20A	
Exhaust & Filter system	External exhaust carbon filter system with carbon filter	
Vacuum system	External vacuum system provided	
Operating conditions	Humidity max 70% Temperature 15-26° / 59-79 F /(+/-%)	
Multiplate Software Platform Specification	Windows 7 Professional Server 64 bit 3 Ghz Quad Core (4 cores with Hyperthreading) 32 GB RAM DVD ROM / Minimum 1 USB port for Dongle Dual 100/1000 Network Interface 1 TB hard disk	

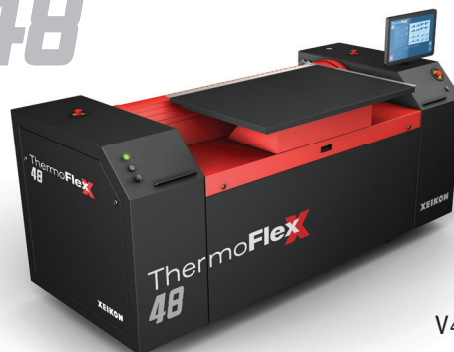
□ standard    ■ optional



The above mentioned specifications are valid from 04-01-2016 and overrule all previous specs. There is no legal commitment towards the specifications, due to ongoing changes of the product.

# ThermoFlex

## 48



V4 2017-04-13

www.thermoflexx.com  
info@thermoflexx.com

**XEIKON**