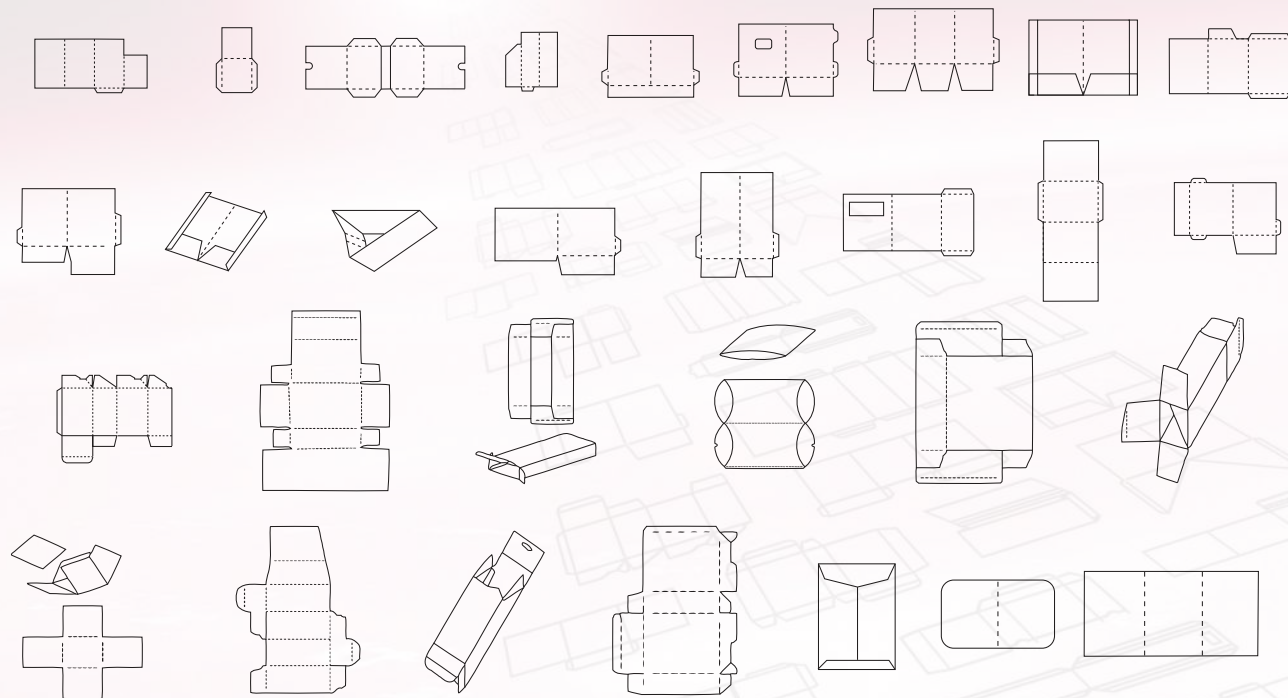
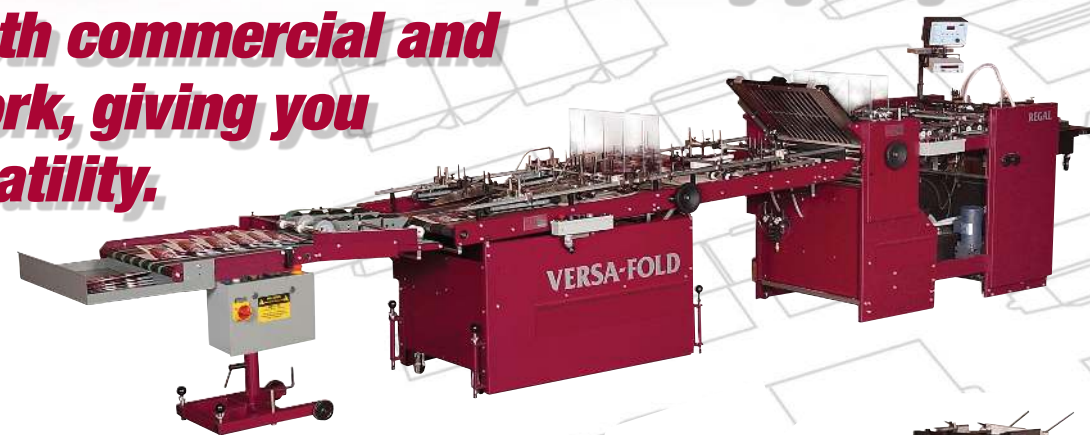


A small snapshot of some of the capabilities.



You can add one of our Pile Feeders or Bottom Friction Feeders to keep folding/gluing off-line for both commercial and packaging work, giving you the most versatility.

REGAL SYSTEM



VANTAGE 720/920 IN-LINE SYSTEM



B&R Moll

Our global headquarters located in Warminster, PA incorporates advanced engineering and research departments, in addition to a sophisticated machine shop for the production and assembly of most of the equipment and accessories shown in our latest catalog.

We can design, engineer, and fabricate for your specific needs. We have facilities to completely rebuild your folding machine and make your folder look and act like new.

Both our North American and European Operation Headquarters-MOLL International Ltd. have well stocked parts departments for most makes and models of leading brands of folding machines (like MOLL*, MBO*, Baumfolder* and Stahl*) enabling us to ship your order within 24 hours to minimize your downtime. We also offer on-site service, maintenance and training.

If you wish to place an order or require additional information please call TOLL FREE: (U.S.A. and Canada) 866-438-4583. In the UK: +44 (0) 1268 560962.

MOLL is a family run business for three generations.

Finishing may be the last thing you do, but it's the first thing your customer sees.

Built and Assembled in the U.S.A.

The products offered in this brochure are proprietary products and are protected by U.S., Canadian, and Foreign patents.

PREMIER 36 SYSTEM



REGAL SYSTEM



MARATHON SYSTEM



VANTAGE 720 IN-LINE SYSTEM



THE FINISHING SYSTEMS EXPERTS

MOLL
B&R MOLL

GLOBAL HEADQUARTERS

TEL: 267-288-0282
Fax: 267-288-0284
www.mollbrothers.com
744 Nina Way
Warminster, PA 18974 USA

MOLL INTERNATIONAL, LTD.
www.mollinternational.co.uk
Office / Showroom: +44 (0) 12685 60962
Unit 13 Brocks Business Park, Hodgson Way
Wickford, Essex SS11 8YN
United Kingdom

*MOLL, B&R MOLL, Inc., are registered trademarks

© 2018 B&R MOLL, Inc. Printed in U.S.A.

MOLL
flexcut
System

Do all your die cutting, stripping, folding, and gluing in one process... all in-house with MOLL!

THE FINISHING SYSTEMS EXPERTS

MOLL
B&R MOLL

www.mollbrothers.com

The MOLL flexcut

Rotary Diecutting System

The MOLL die cutter, folder gluer creates a distinct position in the Label, Mail, Printing and Packaging Markets for sheet-fed applications. It will also kiss cut and cut-score products in an infinite number of shapes and sizes including substrate thicknesses up to 24pt paperboard. It's ideal for finishing boxes, cartons, labels, pocket folders and other types of packaging.



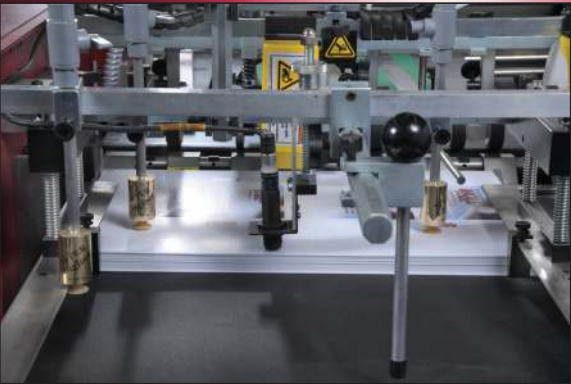
Rear Suction
Cups

Stripping section
with Matrix
removal

Benefits:

- Quick change overs
- Economical / cost efficient
- User friendly
- Touch screen controls
- Decreases handling
- Increases Production and profits
- Keeps all processes in-house
- Run multiple ups
- Inline stripping unit

B&R MOLL introduces their in-line, sheet-fed, flexo magnetic rotary die cutter, folder/gluer system.



Servo Register
Infeed with
Dual Air
wheel Suction



Digital Print
Read and
Lead Edge
Read Capable

Features

- Touch screen controls
- Top air suction feed w/ adjustable sucker heads with adjustable front air separation blower
- Servo driver pre-registration
- Positive side register on the operator side
- Sheet count and batch control monitors
- Off-site maintenance trouble shooting capabilities
- Mechanical double-sheet detector
- Digital Print to cut registration and lead edge cut registration
- Servo driven registration – Gripper – less
- One servo driven infeed nip to drive and register sheets into the die cutter

- Dual magnetic cylinders which houses magnetic flexible die
- Micro Gap die control in 0.0001 increments
- Spherical roller bearings class 3 - Sealed for life
- Direct vertical cylinder loading – the sheets of paper stay flat while traveling through machine
- Run speeds up to 7,000 sheets per hour w/ variable speed adjustment
- One no-sheet detector after die nip, which will shut down machine if sheet, is missing after going through die nip
- Stripping section that deflects the matrix waste down
- Jam detector at the matrix diverter

System Specifications:	Imperial	Metric
Minimum Sheet Size:	17"W x 11"L	431mm x 279mm
Maximum Sheet Size: MOLL flexcut 760	30"Wx 30"L	760mm x 760mm
Maximum Sheet Size: MOLL flexcut 508	20"W x 20"L	508mm x 508mm
Minimum Substrate Thickness:	10pt paper stock	220gsm paper weight
Maximum Substrate Thickness:	24pt paper board	400gsm
Product Speed:	h7,000 an hour	7,000 an hour
Electric	60hz, 220v, 3ph, 30 amp	50hz, 400v, 3ph, 30 amp

You can run the Moll Die Cutter Systems' work directly from the Stripping Unit, into Moll's Versa-Fold and Dial-A-Stack for die cutting, stripping, folding, gluing and finishing in-line! Through the integration of Moll's Die Cutter and Folding/Gluing equipment you are making a 4 step process a 1 step process reducing time, labor, and ultimately leading to more profit for your company.

VERSA-FOLD



The Moll Versa-Fold allows for a wide variety of layouts to be performed on this unit. The optional Tipper Fold Plate creates another feature not found on any unit of its type. Gluing, forming pockets, plow folding, turning paper direction, and final folding are just a few of the many tasks given to this high speed, versatile unit. Also, this unique plow fold table is capable of being used behind your paper folder systems to add more finishing solutions. Optional register, hot, or cold glue systems are available. Available in 30" and 36" wide formats.

DIAL-A-STACK



Moll's Dial-a-Stack is designed to meet your machine speed demands with the much needed stock capacity. The Dial-a-Stack is an adjustable mobile stacking unit. The height can be adjusted to any section with ease. It has a two-stage stack table and is controlled by a variable DC drive. The sheet scanner feature eliminates delivery jam-ups caused by feeder gaps. When there is a feeder gap, the stacker will stop and wait for the next sheet. Also, the Moll Dial-a-Stack can be used as a delivery unit to any make and/or size folding machine.



Moll's In-line Die Cutting and Folding/Gluing Solution