

DIGITAL MULTI-MEDIA PRESS

XANTÉ



+ PlateMaker **8**
INSIDE

+ Includes
iQueue XII
Simply Brilliant Workflow



INTRODUCING!
ALL NEW
ENTERPRISE-SL
COMPACT HIGH SPEED FEEDER



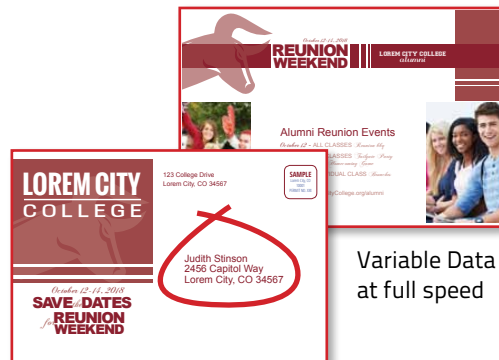
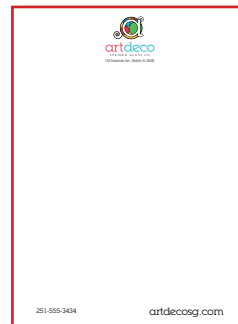
Reliable. Profitable. Easy.

The En/Press Digital Multi-Media Press with the patented Enterprise High Speed Feed System or the new Enterprise-SL Feeder offers users an affordable way to go digital and meet the demand for fast, full-color printing. Enterprise's groundbreaking design features a straight multi-speed feed path for a faster and smoother delivery compared to other feed methods. The complete digital solution is driven by iQueue Simply Brilliant Workflow that offers new file editing options, new variable data manager, advanced color correction tools and so much more.

Improve In-House Productivity

En/Press Digital Multi-Media Print Systems allow you to do more for your customers, in-house

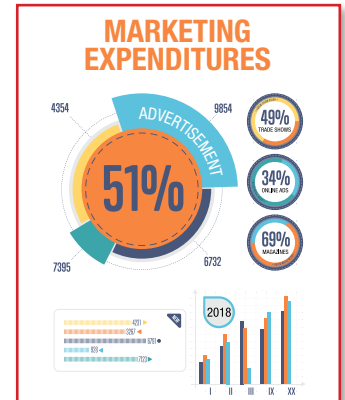
- Allows you to print on a wider variety of media and in a wider range of sheet sizes.
- Dramatically improved print speeds with a standard 320 GB Hard Disk Drive.
- Up to 4,000 full color envelopes per hour
- Features a lower cost per sheet while you increase profit margins.
- Run full color jobs including variable data in one pass.
- iQueue Simply Brilliant Workflow automates prepress production and provides critical color adjustments.



Variable Data
at full speed



NCR Forms



Full color sheets, envelopes
and cards



Label stocks

Astonishing Full-Color Results

The En/Press Digital Series features a multi-bit print engine that delivers outstanding color and print quality your customers expect

- Resolutions up to 4800 for exceptional sharpness, clarity and color quality.
- iQueue can match any spot color that can be created with CMYK **dead-on every time**. Xanté's patented RightON® color matching technology makes spot color matching simpler than ever.
- New HD toner offers a wider color gamut. The smaller particles enable the En/Press Digital Color Series to capture subtle changes in color and tone.
- Output is waterproof and laser safe.

More Media / Feed Choices

Outstanding media flexibility allows you to offer your customers more and helps eliminate costly outsourcing

- Prints on a variety of stocks including: Uncoated, coated, NCR, card stocks, textured stocks, label stocks and envelopes (4 Bar, Monarch, standard #10, window** and larger).
- Prints on 18pt cover (400gsm).
- Print oversized sheets / banners up to 13" (330 mm) x 49.6" (1260 mm) - manual feed.

Computer-to-Plate

PlateMaker **8**
INSIDE

Xanté is pleased to announce a revolutionary advancement in Computer-to-plate (CTP) printing technology. The En/Press Revolutionary Digital Multi-Media Press with PlateMaker 8 inside is a brand new polyester CTP system. Specifically designed for small commercial printers and print shops, this solution is low cost, high quality, and chemical free. The best part is that it's all contained WITHIN the En/Press which is already the best way to print your envelopes, NCR forms, stationery, invitations, announcements and more!

PlateMaker 8 Specifications

| | |
|------------------|---|
| Myriad 2 Plates | Available in the following sizes: 10" x 15", 10" x 15½", 10" x 16½", 11" x 18", 11" x 18½", 11¼" x 18½", 11¼" x 19¾", 11¼" x 19¾", 12" x 18", 12" x 19¾", 12" x 19¾", 12" x 25", 13" x 19¾", 13" x 19¾" |
| 340mm Option | 13¾" x 19¾" (340mm x 505mm) |
| Media Weights | 4 mil plates |
| Noise Level | Printing - less than 49.5 dB; Standby - less than 35 dB |
| Printer Language | Adobe PostScript 3 |
| Typefaces | 136 resident PostScript Typefaces; TrueType® 42 font rasterizer; Types 1/3/4/5/6 PostScript download support |
| Interface | 10/100BaseT Ethernet® |



Customize with the Feeder System that works for your needs. (no feeder, Enterprise-SL, or the complete Enterprise Feed System)

Make it fit your shop and your needs:

You may choose to add on our patented Enterprise High Speed Feed System and take full advantage of the En/Press. Available in two sizes, this straight-line path, dual-speed feed system gives you a distinct advantage in a competitive industry.



ENTERPRISE
HIGH SPEED FEED SYSTEM

- **THE BEST envelope feed system IN THE WORLD**
- Load up to 1,000 #10 envelopes and walk away
- Quick adjust guides for faster media changes



ENTERPRISE-SL
COMPACT HIGH SPEED FEEDER

- **NEW COMPACT DESIGN**
28.75" x 11.5" x 22.25"
- Load up to 500 #10 Envelopes
- Media from 3.5" x 3.5" up to 13" x 49"
- Load media on-the-go





ENGINE SPECIFICATIONS

| | |
|-----------------------------------|---|
| Configuration | Desktop |
| Technology | Laser-beam scanning & electrophotographic printing with dual component toner development, 4-drum tandem method, output water proof and laser safe |
| Printing Speed | Color 60 ppm / Black & White 60 ppm Except when feeding from the bypass tray |
| Warm-Up Time | 22 seconds or less |
| First Print Speed | 8 seconds or less |
| Duplex Print Speed | Near 100% productivity for all paper sizes |
| Print Resolution | 600, 1200, 2400 or 4800 |
| Input Capacity | Standard: 2 x 550 sheets + 100-Sheet Bypass Tray |
| Output Capacity | Standard: 500 sheets face down |
| Paper Sizes | |
| Feed Tray 1: | Letter / A4 |
| Feed Tray 2: | Min: 7.17" W x 5.83" L (182 x 148 mm) Max: SRA3* 12.5" W x 17.7" L (320 x 450 mm) |
| Multi-Purpose Tray: | Min: 3.5" W x 3.5" L (89 x 89 mm) Max: 13" W x 49.6" L (330 x 1260 mm) |
| Paper Weights | |
| First / Second Tray: | 16 - 68 lb. Bond - 14pt Cover (60 - 320 gsm) |
| Bypass Tray: | 16 - 68 lb. Bond - 18pt Cover (60 - 400 gsm) Feed source for Labels, OHP and Envelopes |
| Duplex Unit: | 60 - 256 gsm |
| Paper Types | Bond, Plain, Recycled, Preprinted, Special, Color, Letterhead, Card Stock, Glossy, Coated, Labels, OHPs and Envelopes (4 Bar, Monarch, #10, window* and larger) |
| Auto Duplex | Standard |
| Dimensions (Base Model) | 23.2" W x 27" D x 28.6" H (587 x 685 x 725 mm) (Standard Configuration) |
| Weight (Base Model) | With consumables loaded (except toner) 187 lb. (85 kg) |
| Power | |
| Operating Power | 992W Consumption |
| Maximum Power | 1.854 kw or less |
| Energy Saver | 2.2W |

PRINTER CONTROLLER (Standard)

| | |
|---------------------------|--|
| CPU | Intel Atom Processor Bay Trail 1.75GHz |
| Memory | 2 GB |
| Hard Disk Drive | 320 GB HDD Standard on all models |
| Printer Languages | PCL 5c, PCL 6, RPCS, Adobe® PS® 3™, PDF Direct Print |
| Fonts | Standard: 45 PCL fonts, 13 Intl Fonts, 136 PS 3 fonts Optional: OCR and Barcode fonts available |
| Standard Interface | Ethernet (1000Base-T/100Base-TX/10Base-T), USB 2.0, SD Slot |
| Operating Systems | Windows 7 to current / Mac OS 10.7 to current |

SYSTEM SPECIFICATIONS

ENTERPRISE HIGH SPEED FEEDER

| | |
|---------------|--|
| Capacity | Load up to 1,000 #10 (241 x 105mm) Envelopes |
| Paper Sizes | 3.5" x 3.5" (89 x 89 mm) - 13" x 49.6" (305 x 1260 mm) |
| Paper Weights | 16 - 68 lb. Bond - 18pt Cover (60 - 400 gsm) |

ENTERPRISE-SL COMPACT HIGH SPEED FEEDER

| | |
|---------------|---|
| Dimensions | 28.75" x 11.5" x 22.25" (73cm x 29.2cm x 69.2cm) |
| Capacity | Load up to 500 #10 (241 x 105mm) Envelopes |
| Paper Sizes | 3.5" x 3.5" (89 x 89 mm) - 13" x 25.5" (305 x 648 mm) |
| Paper Weights | 16 - 68 lb. Bond - 18pt Cover (60 - 400 gsm) |

SUPPLIES

| Consumables | Yield (ISO 19,798 Yields) | Consumables | Yield |
|-------------|---------------------------|--------------|--------------|
| Black Toner | 43,000 pages | Yellow Toner | 34,000 pages |
| Mag. Toner | 34,000 pages | Cyan Toner | 34,000 pages |

Part Numbers

| | | | |
|---------------|------------|--------------|------------|
| Cyan Toner | 200-100373 | Cyan Drum | 200-100377 |
| Magenta Toner | 200-100374 | Magenta Drum | 200-100378 |
| Yellow Toner | 200-100375 | Yellow Drum | 200-100379 |
| Black Toner | 200-100376 | Black Drum | 200-100380 |
| | | CMY Drum Set | 200-100381 |

| | | | |
|------------------|------------|--------------------|------------|
| 110V Fusing Unit | 200-100383 | Transfer Belt | 200-100382 |
| 220V Fusing Unit | 200-100384 | Waste Toner Bottle | 200-100387 |

En/Press ships with starter toner cartridges that yield 21,500 pages for Black and 17,000 pages for each color. Use only Xanté or Xanté approved consumables.



iQueue Simply Brilliant Workflow (Included)

Digital Color Workflow with
Advanced Color Matching
and File Management Tools

Available Features:

- NEW! Cass™ with Presort
- Hundreds of Design Templates
- Multi-Part Form Design
- Sequential Numbering
- Booklet Creation
- Universal Print Driver
- Independent CMYK Color Controls
- Patented Spot Color Matching
- Job Cost Estimator
- Full Imposition and Tiling
- Custom QR Code Generator
- Import Variable Data with Intelligent Mail barcodes*
- Automatic Creep Adjustment and more



xante.com

US: 251.473.6502

EU: +31 (0) 26.319.3210



Adobe® PostScript® 3™

©2018 Xanté Corporation. Xanté, the Xanté logo, En/Press, iQueue and Right-On are registered trademarks of Xanté Corporation. Adobe and PostScript are registered trademarks of Adobe Systems, Inc. Cass™ is a registered trademark of USPS. The Specifications listed here are subject to change without notice. *Paper size only. **Laser safe window envelopes only. Patent pending technology. *Call for details.